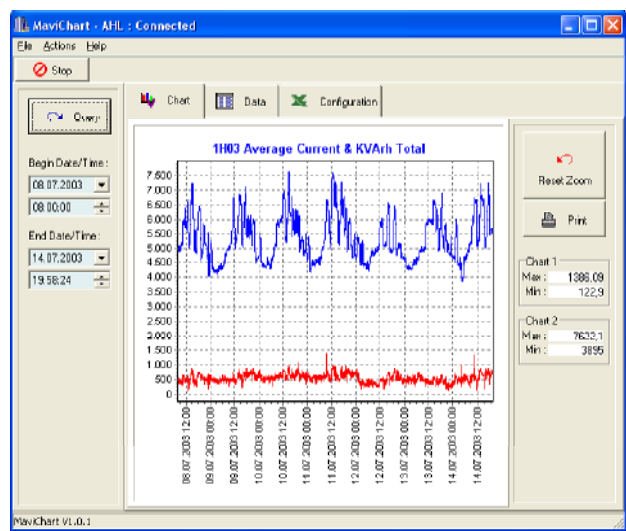
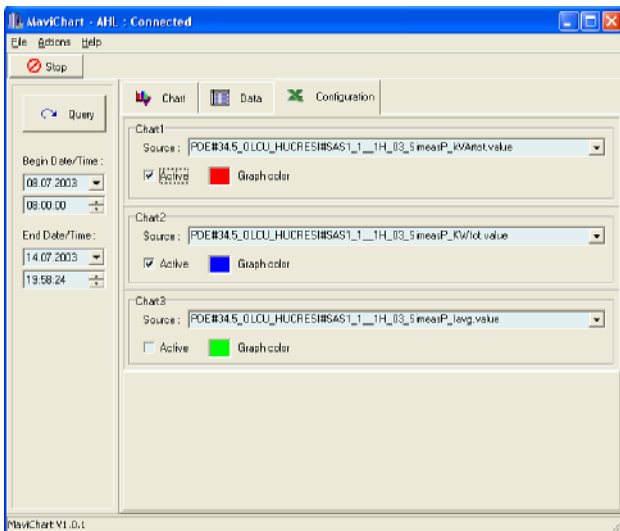
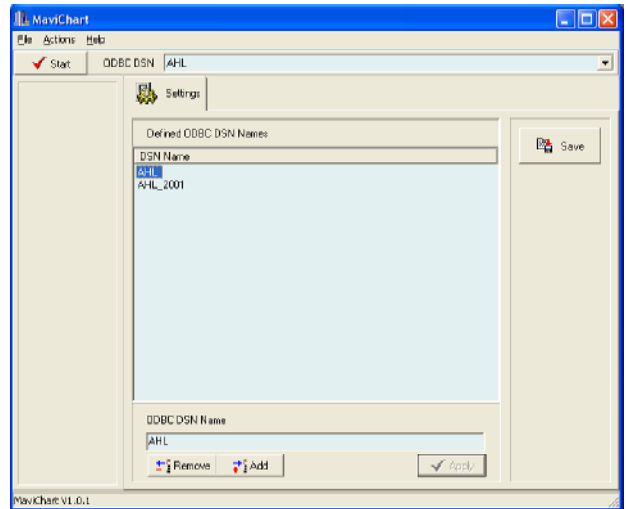




MaviChart Trending for Siemens WinCC® SCADA Software

MaviChart Trend Software

- MaviChart is a trending tool for Siemens WinCC® SCADA software's runtime database.
- Connection is made to the Sybase Runtime database via ODBC DSN definition. MaviChart allows multiple runtime database connection which is parametrised at the start screen.
- After the connection to the database is established, via Chart tab it is possible to define pens as tags defined at Tag logging of the WinCC. It is possible to define multiple pens at a trend.
- You may parametrise trend's time range Start/End Date time precisely for query of the values at the tag logging database.



CSV Export to Application like Microsoft Excel®

- Data tab allows user to diagnose values of the runtime database and allows export to CSV files that are readable by applications like Microsoft Excel®.

Printing Trends

- MaviChart has powerful printing capabilities of trends that are able to print trends as it is seen at the screen precisely.

T	V	F
08.07.2003 08:00:20	465.200012207821	1
08.07.2003 08:01:20	465.200012207821	1
08.07.2003 08:02:20	465.200012207821	1
08.07.2003 08:03:20	465.200012207821	1
08.07.2003 08:04:20	470.700012207821	1
08.07.2003 08:05:20	470.700012207821	1
08.07.2003 08:06:20	470.700012207821	1
08.07.2003 08:07:20	470.700012207821	1
08.07.2003 08:08:20	470.700012207821	1
08.07.2003 08:09:20	517.5	1
08.07.2003 08:10:20	517.5	1
08.07.2003 08:11:20	517.5	1
08.07.2003 08:12:20	517.5	1
08.07.2003 08:13:20	517.5	1
08.07.2003 08:14:20	484.299587792949	1
08.07.2003 08:15:20	484.299587792949	1
08.07.2003 08:16:20	484.299587792949	1
08.07.2003 08:17:20	484.299587792949	1
08.07.2003 08:18:20	484.299587792949	1
08.07.2003 08:19:20	479.700012207821	1

❖ Simatic WinCC® is registered trademark of Siemens Energy & Automation, Inc.
❖ Microsoft Excel® and Microsoft Access® is registered trademark of Microsoft Corp.